



D1xB2LD2

LED Multi-function Beacon

Datasheet Version 1.1



Output: High power LED array

IP Rating: IP66

Colour: Amber/Blue/Clear/Green/Magenta/Red/Yellow

Voltages: 24Vdc/115Vac/230Vac

Audio visual signalling 

Hazardous area 



Tel: +44(0)1252 725257

Fax: +44(0)1252 727627

© 2019/20 LGM Products Ltd.

Email: sales@lgmproducts.com

Web: www.lgmproducts.com

ISO 9001:2015 certified

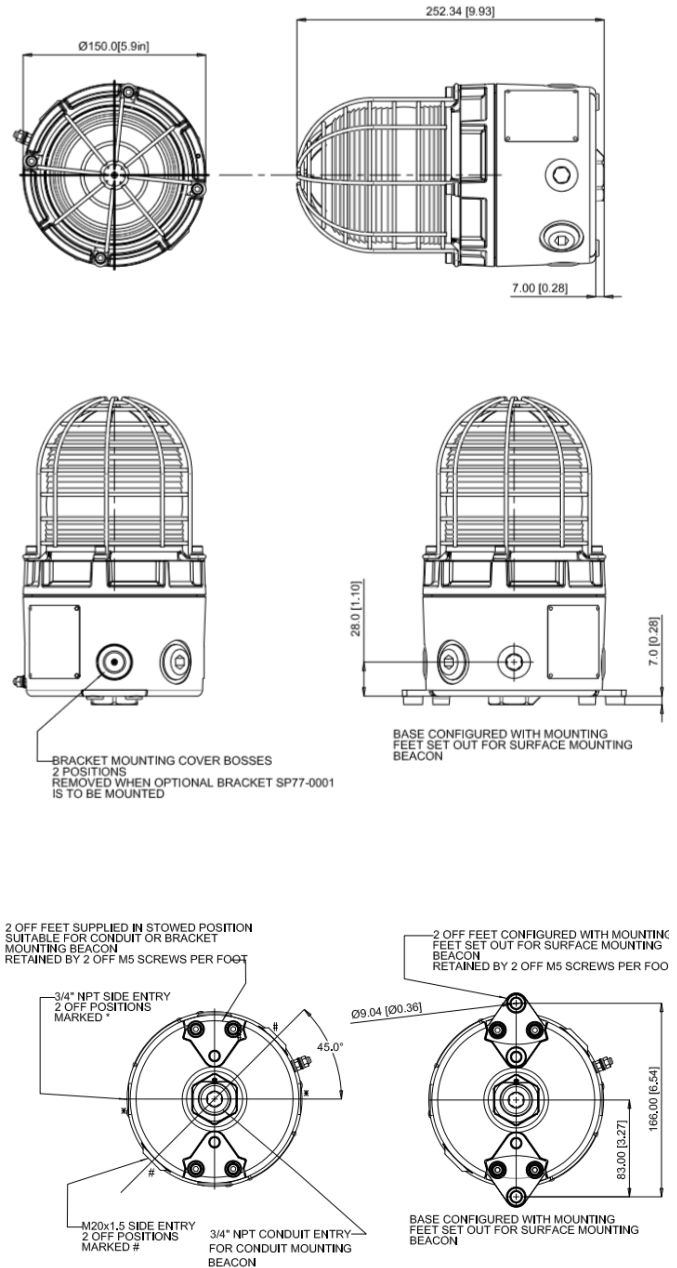
Address: LGM Products Ltd, Unit 15 Riverside Industrial Park, Farnham, Surrey, GU9 7UG, United Kingdom.

D1xB2LD2

LED Multi-function Beacon

Datasheet Version 1.1

Light source	LED array (4x high output LED)
Intensity	174cd (high power steady), 338cd (1Hz flash)
Modes	1Hz flash (60 fpm), 1.5Hz flash (90 fpm), 2Hz flash (120 fpm), Double strike flash, Triple strike flash, High Power Steady, Low Power Steady
IP rating	IP66
Cable entry	Side: 2 x 3/4" NPT & 2 x M20x1.5 Pendant: 1 x 3/4" NPT
Terminal capacity	0.5 - 2.5mm ² (20-14 AWG)
Unit weight	3.2kg
Operating temp.	-55° to +80°C
Storage temp.	-55 to +80°C
Relative humidity	95% – Additional topicalization is recommended for applications where both high relative humidity and high ambient temperatures exist
Unit material	Marine grade LM6 aluminium alloy Chromate & powder coated finish – anti-corrosion
Body colour	Red (RAL3000) or Grey (RAL7038)
LED colour	Amber/Blue/Clear/Green/Magenta/Red/Yellow
Approvals	<i>ATEX / IECEx</i> II 2G Ex db IIC T5 Gb Ta -55°C to +80°C II 2G Ex db IIC T6 Gb Ta -55°C to +45°C II 2D Ex tb IIIC T100°C Db Ta -55°C to +80°C <i>NEC Class / Zone</i> Class I Zone 1 AEx db IIC T5 Ta -55°C to +80°C Class I Zone 1 AEx db IIC T6 Ta -55°C to +70°C Zone 21 AEx tb IIIC T100°C Ta -55°C to +80°C <i>CEC Class/Zone</i> Ex db IIC T4 Ta -55°C to +80°C Ex db IIC T5 Ta -55°C to +70°C Ex tb IIIC T100°C Ta -55°C to +80°C <i>NEC / CEC Class / Div</i> Class I Div 1 Group ABCD T5 Ta -55°C to +80°C Class I Div 1 Group ABCD T6 Ta -55°C to +75°C





D1xB2LD2

LED Multi-function Beacon

Datasheet Version 1.1

Current Consumption

Voltage	Range	Nominal current	In rush
24Vdc	18-30Vdc	230mA	18980mA
115Vac	110-120Vac 50/60Hz	95mA	-
230Vac	220-240Vac 50/60Hz	30mA	-

Part Codes

Part Code:	Ident.:	Description:
Product type:	D1xB2	
Type:	LD2	Multi-function LED beacon
Voltage:	DC024 AC115 AC230	24V dc (18-30Vdc) 115Vac (110-120Vac) 230Vac (220-240Vac)
Cable entries: [e]	M	Side: 2 x 3/4" NPT & 2 x M20x1.5 Pendant: 1 x 3/4" NPT
Stopping plug material: [m]	B N S	Brass Nickel plated brass Stainless steel
Lens guard & tag: [s]	1 2 3 4	A2 304 Stainless Steel A4 316 Stainless Steel A2 304 St/St with Equip. Tag A4 316 St/St with Equip. Tag
Version: [v]	A1 S1 T1	UL, cUL, ULC, IECEx, ATEX UL, cUL, ULC, IECEx, ATEX – SIL2 UL, cUL, ULC, IECEx, ATEX – Tropicalised
Enclosure: [x]	R G S	Red RAL3000 Grey RAL7038 Special colour – contact E2S
Lens colour: [y]	A, B, C G, M, R Y	Amber, Blue, Clear Green, Magenta, Red Yellow
SP77-0001-A2-R/G SP77-0001-A4-R/G SP65-0001-A2 or A4 SP65-0003-A2 or A4		Multi angle wall bracket St/St A2 (304) Red or Grey Multi angle wall bracket St/St A4 (316) Red or Grey Pole Mount Bracket Kit 2" St/St A2 (304) or A4 (316) Sunshade – St/St A2 (304) or A4 (316)
SP77-0005 SP77-0006		Spare Pack of 2 x Surface Mount Lugs Spare Pack of 2 x Bracket mount hole plugs

Tel: +44(0)1252 725257

Fax: +44(0)1252 727627

© 2019/20 LGM Products Ltd.

Email: sales@lgmproducts.com

Web: www.lgmproducts.com

ISO 9001:2015 certified

Address: LGM Products Ltd, Unit 15 Riverside Industrial Park, Farnham, Surrey, GU9 7UG, United Kingdom.